

SMART SOLUTIONS FOR YOUR SUCCESS



Offers expire on August 30, 2024

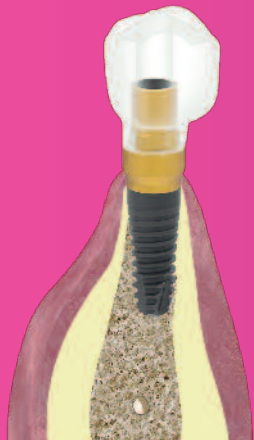
1-800-667-9622 | WWW.SYNCA.COM



EXAMVISION KEPLER REFLEKT

Unobstructed view
...and stylish to boot!

see page 7



BTI[®]'S SOLUTIONS FOR HORIZONTAL & VERTICAL ATROPHIES

Simplified treatments with Narrowest
OR Short & X-short implants



see page 8

CADI[®] OPTIMUM AIR

Wireless sensor with exceptional image
quality - because of its DIRECT
conversion technology!



see page 3

ONE SOFTWARE IS ALL YOU NEED! OPT FOR THE BEST AT COMPETITIVE PRICING!

- Easily acquire, store, access and present all your images
- Only **ONE** software for all your imaging equipment
- Only **ONE** software to learn and use

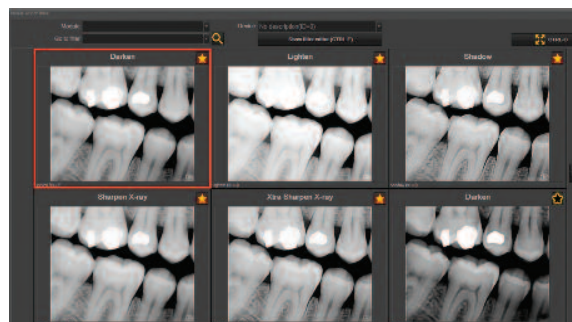
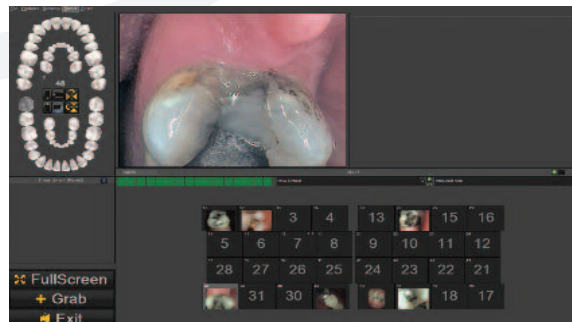


AUTOMATED PROCESSES

Every process is thought out to be a seamless interaction with how you acquire x-rays and images in your office. Acquire multiple images, tag them, save and optimize quickly and effectively.

REAL TIME FILTERING

Use pre-set or customizable x-ray real-time filters to visualize the most diagnostic images possible. The raw image data is always available, so you can unclick a filter at any time. Click on the "Filter" window and simultaneously zoom to view 6 different filtered images.





BREAKTHROUGH IN DIGITAL SENSOR TECHNOLOGY



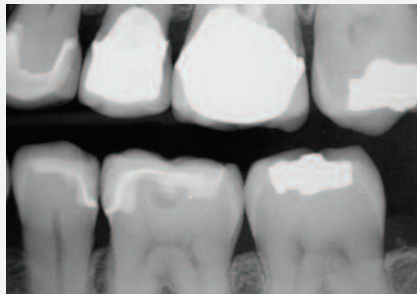
Actual size



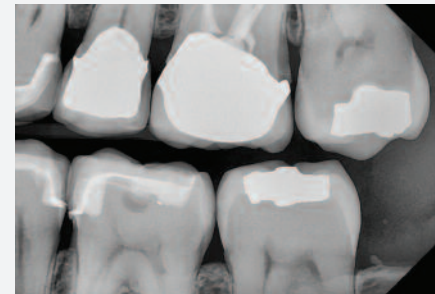
- Crystal-clear radiographs with **NEW DIRECT CONVERSION TECHNOLOGY**
- Convenience of true wireless
- Eliminate USB wear
- Unbeatable patient comfort
- Secure wireless connection with the latest Bluetooth® encryption
- 5 years warranty

DIRECT CONVERSION TECHNOLOGY

Only CADI® Optimum AIR features Direct CMOS technology that creates images directly from x-ray photons. True clarity is achieved without the need for sharpening enhancements.



RAW image of non-direct technology



RAW image of CADI® Optimum AIR

SUMMER PROMO

SAVE \$2,831!

Purchase a CADI® Optimum AIR wireless sensor + a CADI® Optimum Pedo sensor and received an additional docking station **FREE + \$1000 OFF!**



PERFORMANCE-PROVEN FOR YOUR PRACTICE



- Reliable robust build quality
- Active surface: Adult: 900 mm² / Pedo: 600 mm²
- High signal-to-noise ratio increases image clarity
- Optimal line pairs for more diagnostic ability
- **REPLACE THE CABLE, NOT THE SENSOR**
- Peace of mind program
- 5 years warranty





BPA-FREE COMPOSITE WITH EXTREME WEAR RESISTANCE



5g syringe

BIO FUNCTION

- BioFunction is 100% BioCompatible, no BPA, no BisGMA, no HEMA, no TegDMA and no release of nanoparticles that penetrate the cellular membrane
- BioFunction is the ONLY composite with a wear ratio equal to Yellow Gold, which is known to be the best for occlusion, stress reduction on masticatory muscles, and wear longevity
- Can be use for posterior and anterior restorations

PROMO 4+1

Mix of BF1, BF2, BF3 - Call us for shade selection guide

\$143.50 3 @ \$137.70 (ea.) 6 @ \$129.90 (ea.)

Magne 2024

Continuum

In-person education

PASCALMAGNE.COM

FEBRUARY 8-10, 2024
 MASTERING
 MORPHOLOGY & ESTHETICS

APRIL 18-20, 2024
 ADVANCED COMPOSITE VENEERS
 DIRECT TECHNIQUE

JUNE 20-22, 2024
 POSTERIOR COMPOSITE
 RESTORATIONS DIRECT TECHNIQUE

JULY 25-27, 2024
 ADVANCED INLAY/ONLAY
 INDIRECT TECHNIQUE

SEPTEMBER 19-21, 2024
 THE ULTIMATE VENEER
 INDIRECT TECHNIQUE

OFFERED EXCLUSIVELY AT
 BEVERLY HILLS DENTAL LABS *oral design* LOS ANGELES

INFO@CERBRD.COM

Magne

PRESSROOM

Online education

BIOMECHANICS - BIOMATERIALS - ADHESIVES
 PREPARATION DESIGN DIRECT - PREPARATION DESIGN INDIRECT
 LIGHT POLYMERIZATION & SHRINKAGE
 LUTING CEMENTS & PROCEDURES - LAYERING TECHNIQUES
 CAD/CAM APPROACHES - CLINICAL OUTCOMES

PRESSROOM PACKAGE (10 LECTURES)
 \$995.00 USD

INDIVIDUAL LECTURES
 \$250.00 USD

1.5 CE CREDITS PER LECTURE

REGISTER HERE



OFFERED EXCLUSIVELY AT

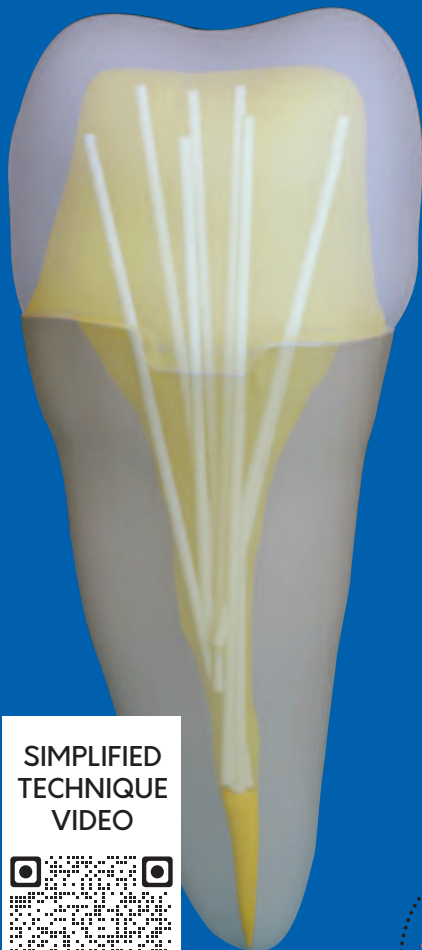
BEVERLY HILLS DENTAL LABS *oral design* LOS ANGELES

PASCALMAGNE.COM • 310-652-0565
 INFO@CERBRD.COM

ADVANCED FIBER ENDODONTIC MULTI-POST SYSTEM

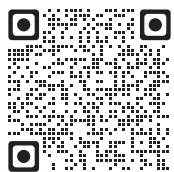
RETAIN 100% OF REMAINING HEALTHY TOOTH STRUCTURE

- Biolight® DRILL-FREE adapts to all canal shapes, while conserving all remaining healthy tooth structure
- Eliminate drilling and all risks associated with intra-canal drilling
- Increase the fracture resistance of your restorations VS unsupported endo-core restorations



Courtesy of Dr. Mancino

SIMPLIFIED
TECHNIQUE
VIDEO



**SUMMER
PROMO**

ONLY \$649 - SAVE \$141

Purchase the NEW intro Biolight® Drill-Free package today! Included: 1-Biolight® Drill-Free Assorted Kit + 1-Biolight® CORE DC + 1-Bond-1® adhesive bottle + 1-Bond-1® DC activator (+ 1 practice model **FREE!**)

SUPERFIT®! - IMPRESSION MATERIAL

- SUPER high tear strength
- SUPER hydrophilic formula
- SUPER snap set
- Direct-to-you low pricing

Soft Putty	Heavy
Medium	Light

SuperFiT! Soft Putty:	\$289	2 @ \$250	3 @ \$211
SuperFiT! Heavy or Medium:	\$68	6 @ \$62	12 @ \$60
SuperFiT! Light:	\$68	2 @ \$62	4 @ \$60

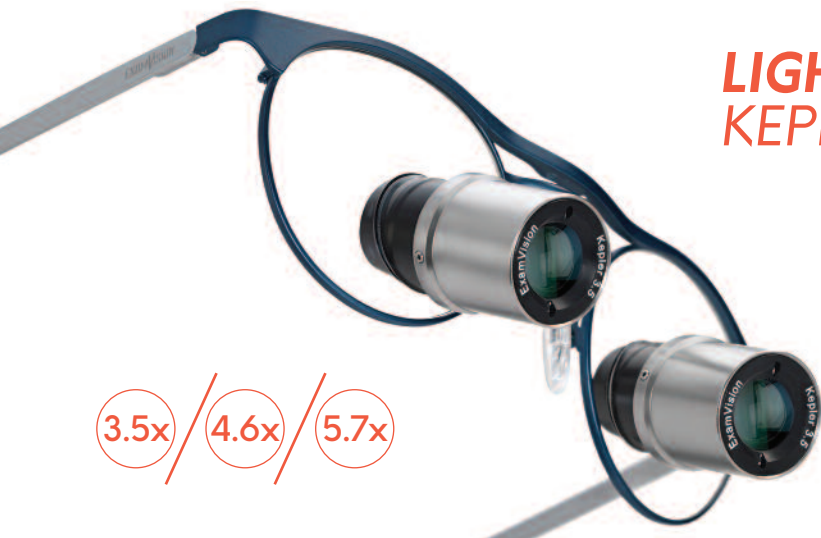


PROMO 4+1

The lowest product will be free



- The only loupe with 4 magnification
- Switch mag. easily via the Turn'N'Click system
- Very light and comfortable, for all day wear – 20 grams lighter than other comparable loupes
- Unparalleled sharpness from low to high magnification
- Made of titanium and carbon fibre-reinforced composite



LIGHTWEIGHT HIGHER MAG
KEPLER KOMPAKT

- Lightweight, ultra-compact prisms
- Suits the most demanding procedures
- Wide field of view, crystal-clear from edge to edge
- PowerUp available to upgrade magnification
- Lockable fine-focus ensures precision



CUSTOM CRAFTED LOUPES
HD GALILEAN

- Perfectly balanced comfort
- Maximum field of depth and width
- Ideal for all day wear
- Dual achromatic lenses
- Any prescription possible
- Oculars now offer in 3 colors



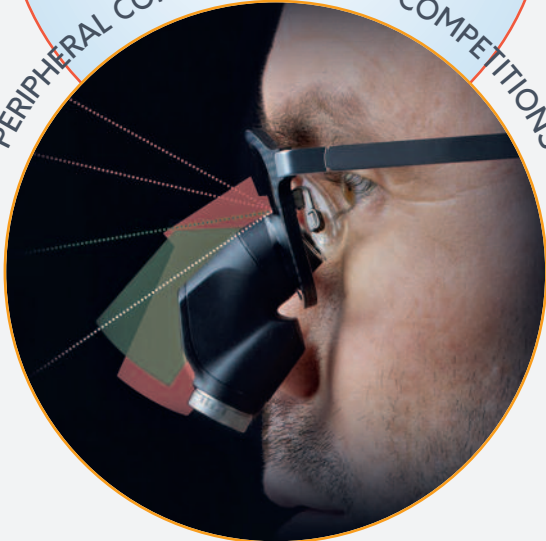
- Natural & superior ergonomics
- Unmatched peripheral vision
- Slim loupe housing made from durable and lightweight magnesium & titanium (Lighter than the already light Kepler Kompakt system)
- Personalized working distance from 35-57cm
- Unique streamlined ergonomic design

FIELD-OF-VIEW

4.0x

◀.. 72mm ..▶

PERIPHERAL COMPARISON WITH COMPETITIONS



SEEING IS BELIEVING!

Discover what you have been missing with an in-office presentation in most areas of Canada. Contact us today to reserve your appointment.

SIMPLIFIED TREATMENTS WITH "3.0" NARROWEST IMPLANTS



Ø 2.5mm indication:

Screw retained multiple restorations with the use of Multi-Im transepithelials. (Never single or direct to implant restorations.)

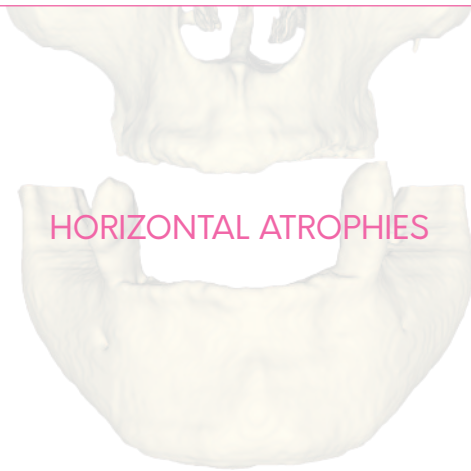
Ø 3.0mm indication:

Recommended for multiple restorations. It could be used in out of occlusion single restorations of lower and lateral upper incisors OR teeth agenesis.

Ø 3.3mm indication:

- Multiple restorations
- Single restorations (in occlusion)

Ø 2.5 Ø 3.0 Ø 3.3



HORIZONTAL ATROPHIES

SOLUTIONS FOR HORIZONTAL ATROPHIES

The 3.0 family of implants enable the treatment of total and partial edentulisms where **bone volume is moderate**, without previously having to undertake bone augmentation.

In cases of severe atrophies, the expansion technique may be carried out less invasively, using the motorized **EXPANDERS KIT** & **ENDORET® (PRGF®)** to achieve the adequate bone volume without having to resort to complex and less predictable surgeries.



SIMPLIFIED TREATMENTS WITH SHORT & X-SHORT IMPLANTS

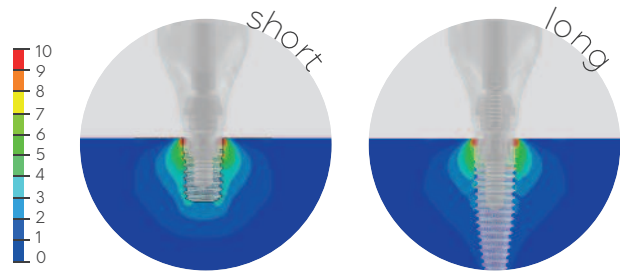
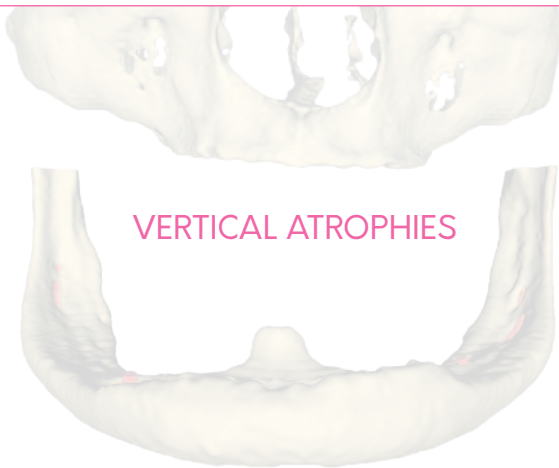


Less is more!

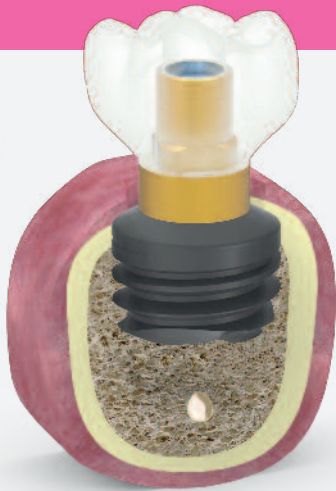
- Atraumatic solution for severe atrophies in both jaws
- Simple and fast implant site preparation
- Predictable surgery, with no need for complex and invasive technique

The key is in the biomechanics

Biomechanical studies back the use of SHORT implants, in comparison with longer implants, proving the capacity to dissipate the generated tensions both from vertical and lateral loads, in the first millimeters of the neck.



SOLUTIONS FOR VERTICAL ATROPHIES



SHORT implants enable the treatment of edentulism **with moderate atrophies** in one surgical step:

- With no maxillary sinus lift
- With no risk in lower jaw because of the proximity to the dentary nerve

For the **severe atrophies**, the **FRONT CUTTING DRILL & ENDORET® (PRGF®)** simplify the surgical approach of the lower jaw and maxillary sinus (vertical bone growth technique, trans-alveolar sinus lift).



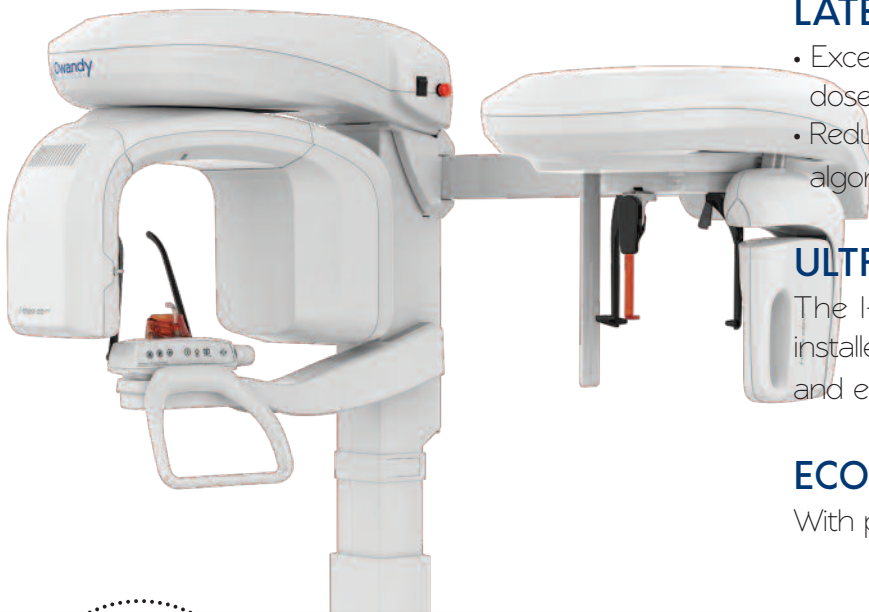
AWARDED FOR DESIGN DESIGNED FOR DENTISTS!



All of the essentials, optimized in every way for the best possible optical, ergonomic and mechanical performance.

- Unparalleled mobility with its MonoGlobe design
- Bigger 5-step full Apochromatic lens system for incredible clarity and light transmission
- Choose between VarioFocus4 (200-350mm) or VarioFocus5 (210-500mm)
- Easy documentation with its 4k or HD imaging ports
- Option of fluorescent light (carries detection + better viewing of composite margins)
- Option of double white lights (perfect for endodontic)

NEW GENERATION PANORAMIC UNITS - 2D, 3D, CEPH VERSION



LATEST GENERATION CMOS SENSOR

- Exceptional image quality while reducing X-Ray doses to protect your patients
- Reduced artefact radiation thanks to Owandy's new algorithm

ULTRA-COMPACT DESIGN

The I-MAX PRO range has been designed to be installed in any type of surgery configuration quickly and efficiently.

ECO FRIENDLY

With product weight reduced **from 210kg to 62kg.**

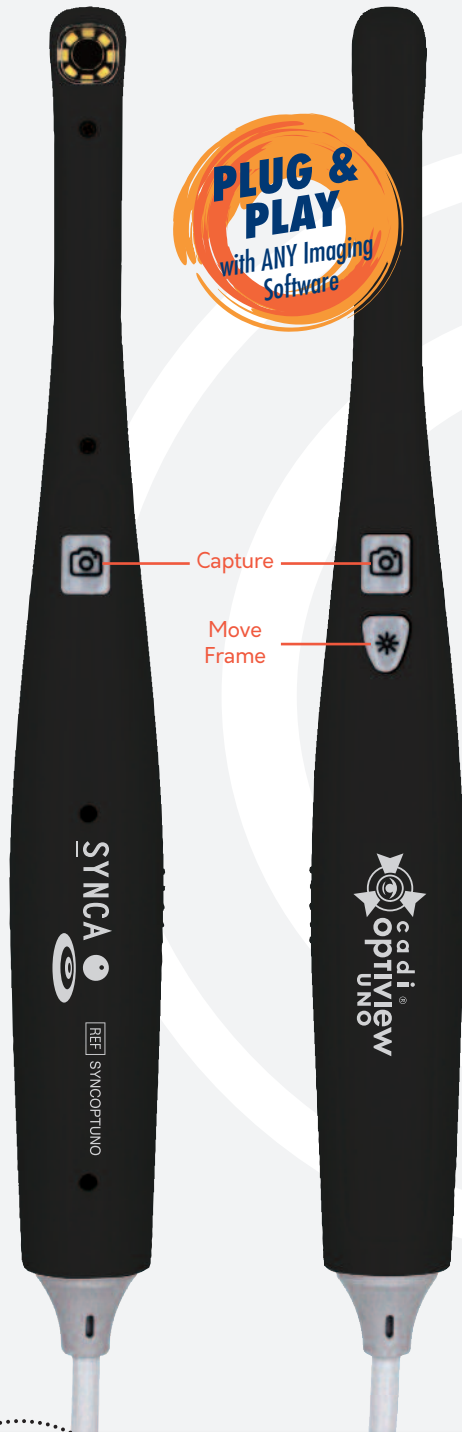
**SUMMER
PROMO**

SAVE \$11,560! Purchase an Owandy I-Max Pan/3D/CEPH or PAN/3D model and receive: 1-CADI® Optimum sensor **FREE!** + 1-CADI® Optiview UNO camera **FREE!** + 1-CADI® primary license **FREE!**

HEALTH CANADA APPROVED! - 720P CLEAR & BRIGHT IMAGES

PERFECTLY INTEGRATED INTO CADI®

Only CADI® intra-oral cameras allow you to move through the intra-oral camera mount, capture and save images directly into the mount, by tooth number. This makes CADI® cameras much easier and faster to use for emergency patients, new patient exams, and all co-diagnosis and treatment planning.



BUY 3 FOR ONLY \$1,299!
IN STOCK NOW





EFFECTIVE & AFFORDABLE WHITENING PROGRAMS



SYNCA WHITENING PROGRAM:

Let's work together to design the whitening program that best meets the needs of your practice.

Whitening is often the starting point of more comprehensive treatment plans, and is the single most requested esthetic treatment.

- **Brilliance 20:** in-office 20 min. treatment
- **Brilliance Xpress:** rapid take-home treatment
- **Brilliance:** traditional take-home treatment



HANDS FREE SUCTION SYSTEM!



EZ DAM® ISOLATION SYSTEM: A full time virtual assistant

- Removal of excess fluids ✓
- Removal of debris ✓
- Tongue and cheek control ✓
- No more cotton rolls ✓
- No more rubber dam ✓

EZ DAM® also provides a smoother experience for hygienists that are working alone to routine scaling and cleaning, placing sealants, or any restorative work.