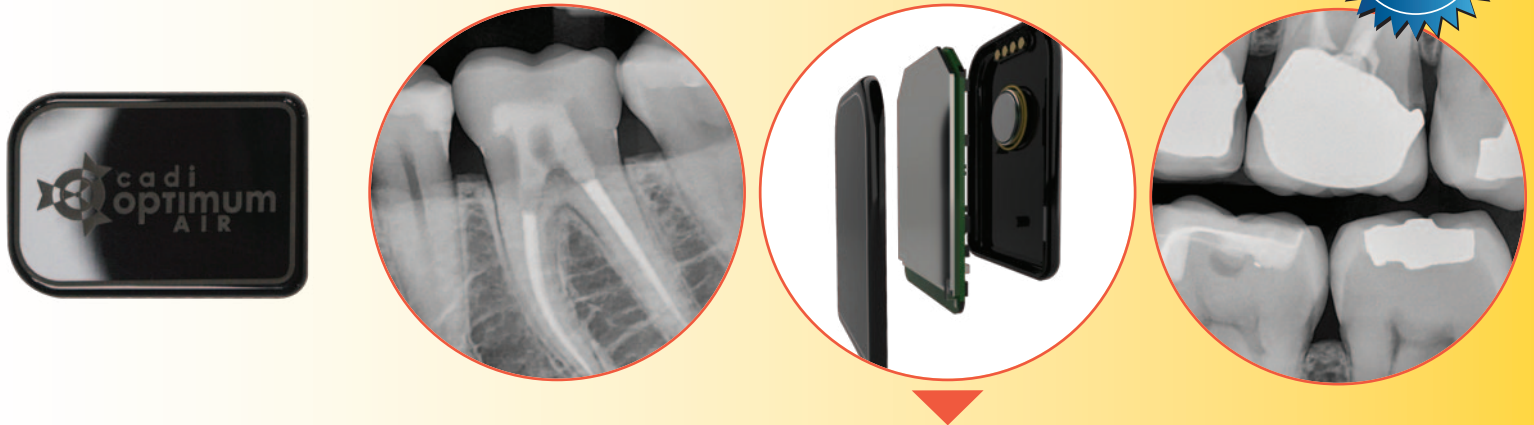


1-800-667-9622 | WWW.SYNCA.COM

CADI® OPTIMUM AIR

Wireless ... is only the beginning!



Direct conversion in radiographic imaging directly converts x-ray signals into electronic inputs, unlike conventional digital sensors that first convert x-rays to visible light using a scintillator. This process, involving an optical fiber plate, often distorts the image and makes sensors fragile. CADI® Optimum AIR improves this by using a direct silicon semiconductor substrate, enhancing image quality and durability compared to traditional sensors.

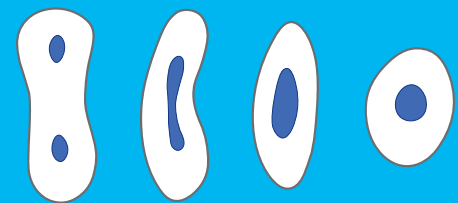
see page 6

BIOLIGHT® DRILL-FREE

Adapt your posts to the root canals, NOT the other way around! Conserve 100% of remaining tooth structure.



ANY SHAPE OF CANAL



see page 9

EXAMVISION KEPLER REFLEKT

Very light ERGO loupes with unobstructed view ...and stylish to boot!



see page 5



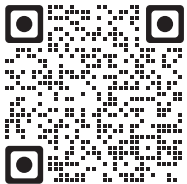
GUIDE SURGERY **STOP & GUIDE**[®]

IN 5 WAYS:

1. Adaptable to different guided surgery protocols: piloted, semi-guided or fully guided.
2. No friction between drills and guide sleeve, no overheating and no release of particles.
3. No specific drills and a very small surgical box.
4. Full control of drilling depth.
5. Your conventional driver-guided drilling sequence.



BTI[®]
VIDEO
CHANNEL



SURGERY, MORE PRECISE
AND PREDICTABLE EVERY DAY!





ACCELERATED TREATMENT FOR LOW-DENSITY BONE AND POST-EXTRACTION SOCKETS



NEW IMPLANT CORE-X[®]

FOR 3 REASONS:

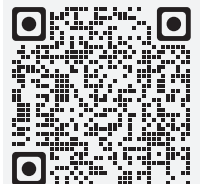
1. Improved primary stability and osseointegration.
2. Optimised osseointegration, thanks to the UnicCa[®] surface.
3. Prosthetic simplicity. One connection for the entire range.



Extra Stability



CORE-X[®]
COMPLETE
BROCHURE



5+1 try-on PROMO!

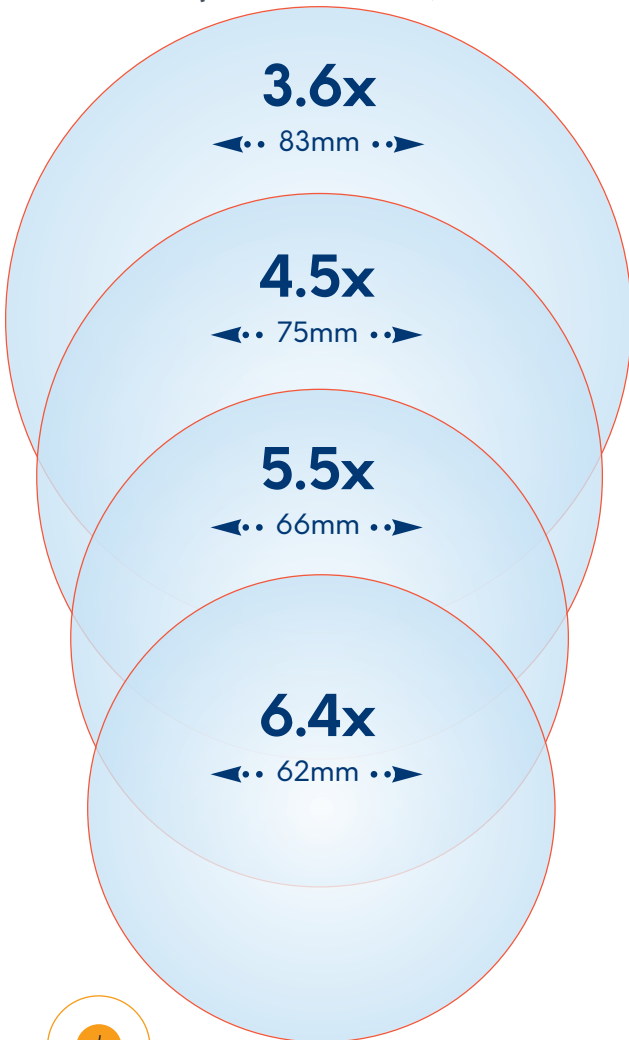
Purchase 5 Core-X implants and get an additional implant **FREE!** Limit: 1 offer per dentist





- Switch mag. easily via the Turn'N'Click system
- Very light and comfortable, for all day wear – 20 grams lighter than other comparable loupes
- Unparalleled sharpness from low to high magnification
- Fine-adjustable focus on each ocular
- Made of titanium and carbon fibre-reinforced composite

FIELD-OF-VIEW



3.6x

Large field of view for general dentistry, diagnostics, extractions, implants, orthodontics and more

4.5x

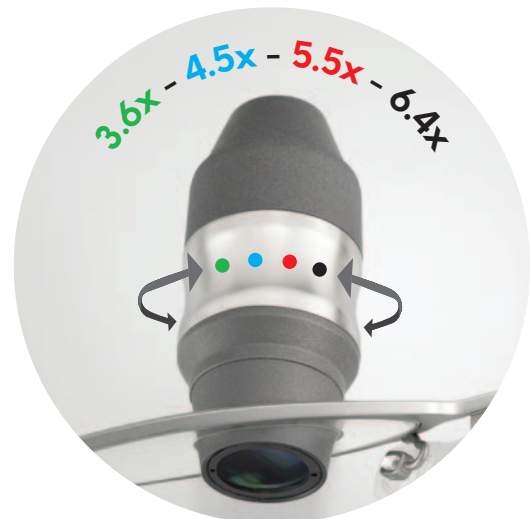
For precision crown and bridge, composites and esthetics, periodontal surgery

5.5x

Ideal for endodontics

6.4x

Near microscope magnification for final margin verifications, complicated endodontics such as accessory canals, complicated diagnostics including horizontal and vertical fractures





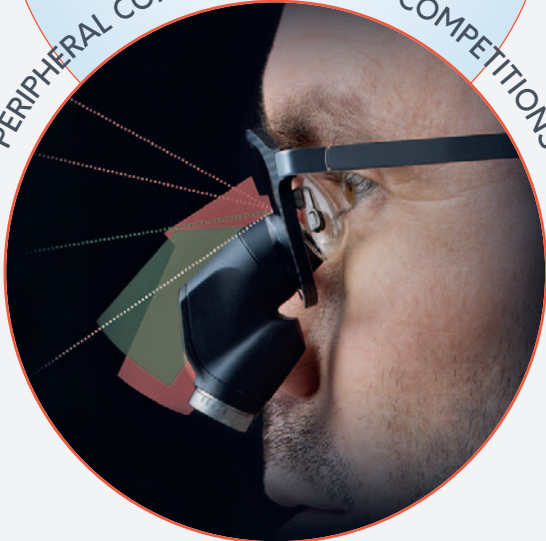
- Natural & superior ergonomics
- Unmatched peripheral vision
- Slim loupe housing made from durable and lightweight magnesium & titanium (Lighter than the already light Kepler Kompakt system)
- Personalized working distance from 35-57cm
- Unique streamlined ergonomic design

FIELD-OF-VIEW

4.0x

◀.. 72mm ..▶

PERIPHERAL COMPARISON WITH COMPETITIONS



As with all ExamVision loupes any prescription is possible

Adjustable fine-focus

Magnesium & titanium oculars - Robust yet lightweight

SEEING IS BELIEVING!

Discover what you have been missing with an in-office presentation in most areas of Canada. Contact us today to reserve your appointment.



BREAKTHROUGH IN DIGITAL SENSOR TECHNOLOGY

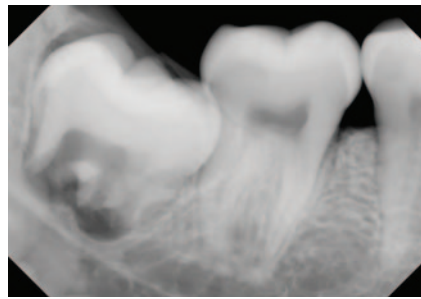


Actual size

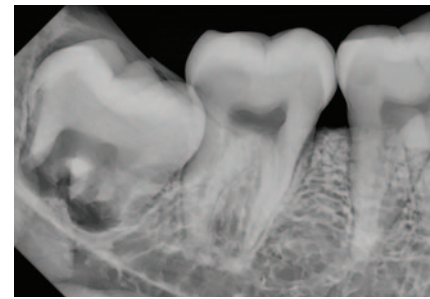
- Crystal-clear radiographs with **NEW DIRECT CONVERSION TECHNOLOGY**
- Convenience of true wireless
- Eliminate USB wear
- Unbeatable patient comfort
- Secure wireless connection with the latest Bluetooth® encryption
- Peace of mind program + 5-year warranty

DIRECT CONVERSION TECHNOLOGY

Only CADI® Optimum AIR features Direct CMOS technology that creates images directly from x-ray photons. True clarity is achieved without the need for sharpening enhancements.



RAW image of brand D



RAW image of CADI® Optimum AIR

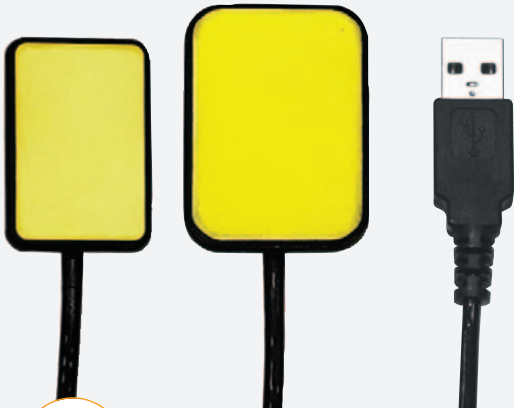


SAVE up to \$1,500!

Purchase a complete CADI® software license suite and get up to \$1,500 OFF Synca's digital sensors!



PERFORMANCE-PROVEN FOR YOUR PRACTICE



- Reliable robust build quality
- Active surface: Adult: 900 mm² / Pedo: 600 mm²
- High signal-to-noise ratio increases image clarity
- Optimal line pairs for more diagnostic ability
- **REPLACE THE CABLE, NOT THE SENSOR**
- Peace of mind program
- 5-year warranty



ONE SOFTWARE IS ALL YOU NEED! OPT FOR THE BEST AT COMPETITIVE PRICING!

- Only **ONE** software for all your imaging equipment
- Easily acquire, store, access and present all your images
- Switch sensor brands (or any imaging equipment) and keep all your images

ANY



ANY



ANY



ANY



ANY



ANY

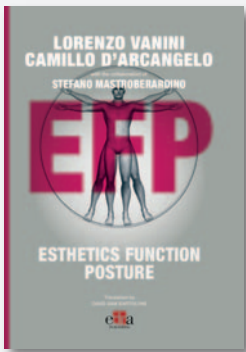


CADI® PEACE OF MIND PROGRAM

- FREE unlimited telephone and remote support
- FREE loaner program on sensors and intra-oral cameras
- FREE CADI® upgrades (during the program)
- EXCLUSIVE discounts for replacement for non-warranty defects during the warranty period
- and more...

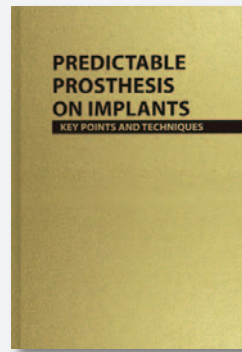


THE BEAUTIFUL THING ABOUT EDUCATION IS THAT NO ONE CAN TAKE IT FROM YOU!



\$587 ESTHETICS POSTURE FUNCTION

This work shows the anatomical connections that unequivocally demonstrate the relationships between occlusion and posture.



\$152 PREDICTABLE PROsthesis ON IMPLANTS

In this book, we summarise the prosthetic options and simplify the clinical practice guide with the aim to attain the right aesthetics together.



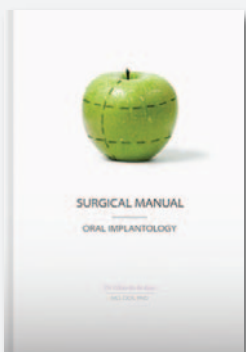
\$152 PERI-IMPLANTITIS A new approach for prevention and treatment

Find out the new guidelines in the pathology-management of increasing incidence of peri-implantitis.



\$165 SHORT AND EXTRA-SHORT IMPLANTS

Learn specific and innovative techniques for treating vertical atrophy in both the maxilla & mandible with short & extra short implants.



\$185 SURGICAL MANUAL Oral implantology

This surgical manual presents a summary of basic information on applied anatomy and biological concepts regarding osseointegration.



\$152 THE POST-EXTRACTION ALVEOLUS A biological approach

Master the regenerative approach to the post-extraction alveolus based on the use of Endoret® (PRGF®) technology.

FALL
PROMO

SAVE up to 30%!

Purchase 1 educational book - **SAVE 20% OFF!**
Purchase 3 educational books - **SAVE 30% OFF!**

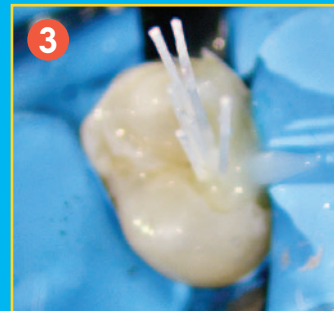
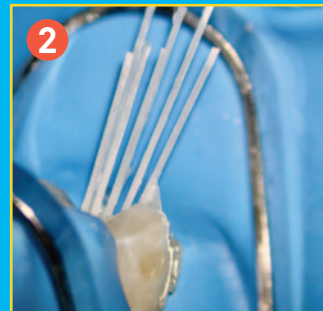
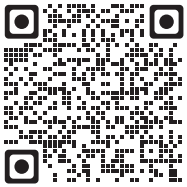
ADVANCED FIBER ENDODONTIC MULTI-POST SYSTEM

71% MORE RESISTANT TO DEFORMATION BEFORE FRACTURE

- Biolight® DRILL-FREE adapts to all shapes of canal, while conserving all remaining healthy tooth structure
- Eliminate drilling and all risks associated with intra-canal drilling
- Increase the fracture resistance of your restorations VS. unsupported endo-core restorations



SIMPLIFIED
TECHNIQUE
VIDEO



Courtesy of Dr. Mancino

FALL
PROMO

ONLY \$414 - SAVE \$101

Purchase the Biolight® Drill-Free Assorted Kit and get 1-Biolight® CORE DC **FREE!** (+ 1 practice model **FREE!**)

Dual cure flowable core build-up and post cementing composite

Synca Biolight® CORE DC is a dual cure flowable composite material that is indicated for bonding of fiber posts and for core build-up. It is an ideal consistency for ensuring bubble-free cementation of Biolight® DRILL-FREE multi-posts and offers excellent physical properties as a core build-up material. The zirconium dioxide nano-particles offer high radiopacity. The dual cure capability ensures complete polymerization for cases where light cure is not suitable.

Biolight® CORE DC (5ml syringe): \$101 ea. **3 @ \$96 ea.** **6 @ \$91 ea.**



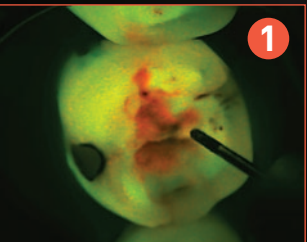
**PROMOTION
15% OFF!**

AWARDED FOR DESIGN DESIGNED FOR DENTISTS!



All of the essentials, optimized in every way for the best possible optical, ergonomic and mechanical performance.

- Unparalleled mobility with its MonoGlobe design
 - Bigger 5-step full Apochromatic lens system for incredible clarity and light transmission
 - Choose between VarioFocus4 (200-350mm) or VarioFocus5 (210-500mm)
 - Easy documentation with its 4k or HD imaging ports
1. Option of fluorescent light (carries detection + better viewing of composite margins)
 2. Option of double white lights (perfect for endodontic)



EZ DAM® ISOLATION SYSTEM: A FULL TIME VIRTUAL ASSISTANT

- Removal of excess fluids ✓
- Removal of debris ✓
- Tongue and cheek control ✓
- No more cotton rolls ✓
- No more rubber dam ✓

EZ DAM® also provides a smoother experience for hygienists that are working alone to routine scaling and cleaning, placing sealants, or any restorative work.

**FALL
PROMO**

ONLY \$399! (First time buyer only)

Get a complete EZ DAM® starter kit + 2 boxes of mouthpieces of your choice (SAVE more then \$425) Limit: 1 offer per dentist.

EFFECTIVE & AFFORDABLE WHITENING PROGRAMS



MANY INTRODUCTORY OFFERS AVAILABLE!



SYNCA WHITENING PROGRAM:

Let's work together to design the whitening program that best meets the needs of your practice. Whitening is often the starting point of more comprehensive treatment plans, and is the single most requested esthetic treatment.

- **Brilliance 20:** in-office 20 min. treatment
- **Brilliance Xpress:** rapid take-home treatment
- **Brilliance:** traditional take-home treatment

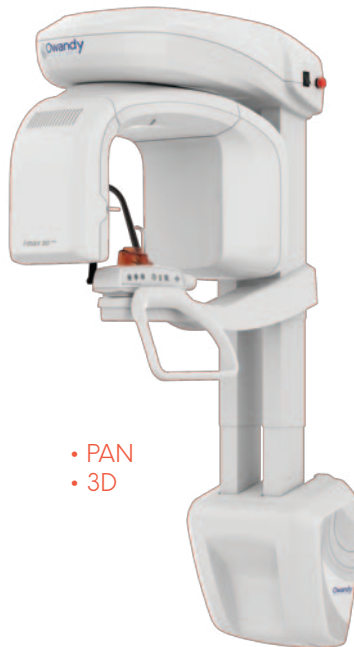


LATEST GENERATION CMOS SENSOR - EXCEPTIONAL IMAGES

Many models to suit your 2D, 3D, PAN & CEPH needs!



• PAN only



• PAN
• 3D



• PAN
• CEPH
OR
• PAN
• 3D
• CEPH

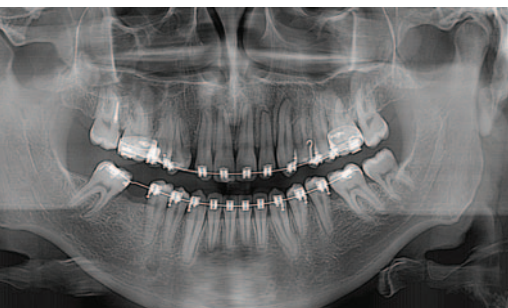
ULTRA-COMPACT DESIGN

The I-MAX PRO range has been designed to be installed in any type of surgery configuration quickly and efficiently.

OWANDY/SYNCA - A WIN-WIN FOR YOU!

- Reliable high-quality machines with reduced artifact radiation
- Plug & Play - Easy installation (3D can be installed in one day)
- Real customer care
- FREE patient positioning guides

5-year warranty!



**FALL
PROMO**

PROMO 10% OFF (SAVE up to \$9,740!)

Purchase any model of Owandy I-Max Pro machine and **SAVE 10%**! Installation included anywhere in Canada. **CALL US TODAY!**

HEALTH CANADA APPROVED! - CLEAR & BRIGHT IMAGES

- **1080P images** - Autofocus from full face to close-up macro
- 7 element glass optical lens produces exceptional image quality
- Anti-fogging and image stabilization systems



PERFECTLY INTEGRATED INTO CADI®

ONLY CADI® intra-oral cameras allow you to move through the intra-oral camera mount, capture and save images directly into the mount, by tooth number. This makes CADI® cameras much easier and faster to use.



- **720P images** - Focal range from one to several teeth
- Slim Head design for easy intra-oral access
- 8 LED lights are finely tuned for even, bright images



CADI® Optiview 2: PROMOTION - ONLY \$2,599 ea.
CADI® Optiview UNO: BUY 3 FOR ONLY \$1,299!

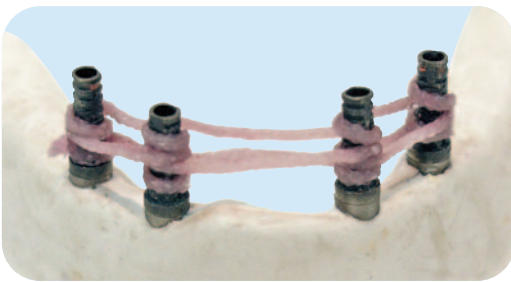
AFFORDABLE RESIN-IMPREGNATED FIBER REINFORCEMENT!

FiBER FORCE®

- Prevents the hassles and costs associated with broken dentures
- Virtually invisible, with no added thickness to the denture
- Significantly superior fatigue & fracture resistance
- FiBER FORCE® bonds chemically to all resin and methacrylate-based materials and has been shown to make it 3 times stronger



Ask your Lab about FiBER FORCE®, or call SYNCA today for more information.

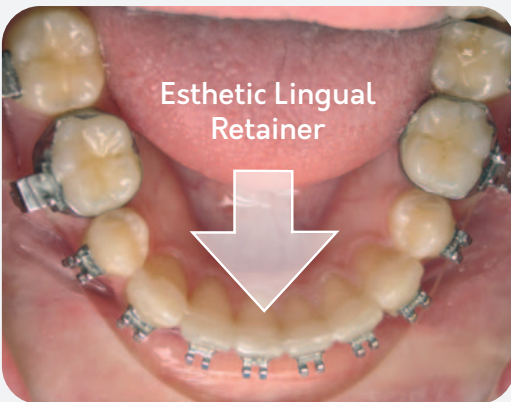


CST® TEMP

CST® TEMP uses a simplified CST® technique and is designed specifically to reinforce provisional dentures for 4 to 6 months. CST® TEMP strengthens the most fragile sections, especially abutment connections. CST® fibers have shown to increase both fatigue and strength of denture acrylic. *CST® TEMP is also ideal for splinting impression analogs.*

PROMO 2+1

CST® TEMP refill (1 – 450mm purple fibers):
\$109 ea. **6 @ \$102 ea.**



FAST SPLINT MATRIX®

- Ideal for orthodontic lingual retainers
- Ideal for periodontic and traumatic splinting
- Ideal for single tooth space maintainers/flippers

*The use of **glass fibers** versus metallic options is attractive because they allow for an effective bond to tooth structures.*

SIMPLIFIED
TECHNIQUE
VIDEO



BUY 2 (or more) @ **\$81 ea.** (reg. \$92)



BPA-FREE COMPOSITE WITH IDEAL WEAR RESISTANCE

Beautiful Posteriors & Anteriors



BIO FUNCTION

So Simple - Use ONLY 3 shades

With a 1 layer technique you can accomplish all Vita® shades with only 3 shades (BF1, BF2, BF3).

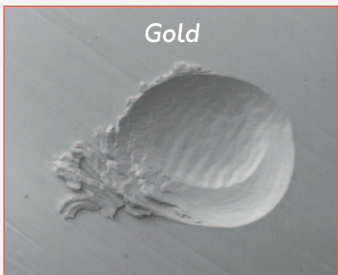
100% Biocompatible

No BPA, no BisGMA, no HEMA, no TegDMA and no release of nanoparticles!

Wear Resistance like Gold

Bio Function is the ONLY composite with a wear ratio equal to Yellow Gold.

5g syringe OR 12 x 0.3g tips
\$143.50 ea. **3 @ \$137.70 ea.** **6 @ \$129.90 ea.**



BUY 4 Get Ena Bond FREE!

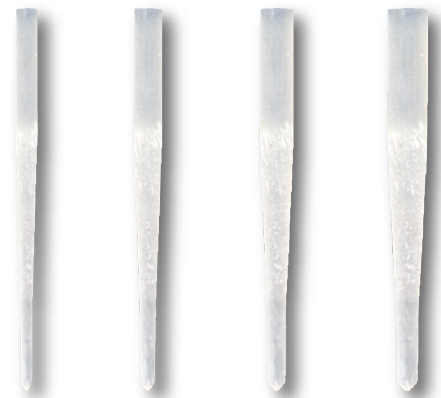
Mix of BF1, BF2, BF3 - Call us for shade selection guide

BIOLIGHT® DUAL & DT POST®

- Double taper posts more radiopaque VS. Quartz posts
- Higher bonding with self-adhesive cements VS. Quartz posts
- More biocompatible: Epoxy-free and bis-GMA-free
- Reduces stress transmission to the root VS. Metal & Ceramic

Biolight® DUAL refills (10 posts - in individual blister):
\$162 ea. **2 @ \$139 ea.** **3 @ \$121 ea.**

DT POST® refills (10 posts):
\$149 ea. **2 @ \$128 ea.** **3 @ \$112 ea.**





1-800-667-9622 | WWW.SYNCA.COM

More choices of frames, colors, options, and personalizations like never before!

ICON



FRAME COLORS
● ● ● ●

PANTO



CLASSIC COLORS



SPLASH COLORS (optional):



CURVE



FRAME COLORS
● ● ●

RIM COLORS:



SPORTS v2



FRAME COLORS



CARBON v2



TEMPLE COLORS

